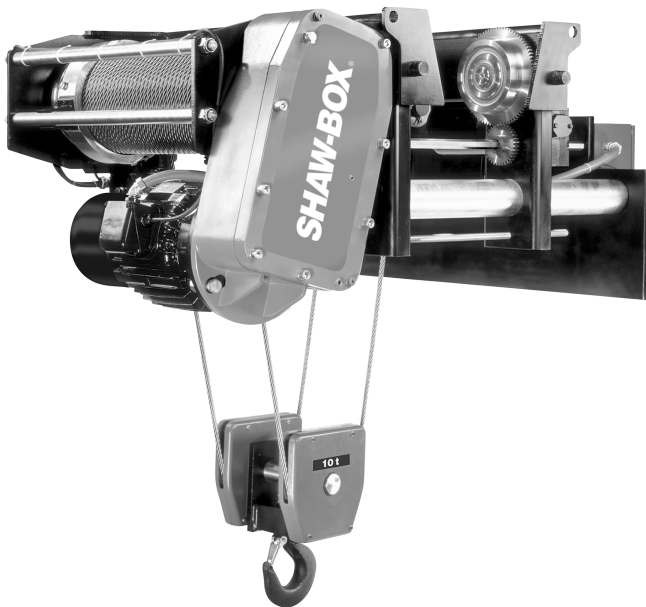


CraneSource™

Yale® Global King™ & Shaw-Box World Series Easy Connect Crane Kits

Price and Specification Book

Prices effective October 4, 2004



Specification Information

This booklet is dedicated to the Yale Global King and Shaw-Box World Series complete Easy Connect Crane Kits.

The Yale Global King and Shaw-Box World Series Easy Connect Crane Kits offers hoists, crane components, bolt together festoon systems with cable plugs and bridge and hoist panels with plug connectors. Bundled for single girder top and under running cranes.

This price and specification book contains crane clearance diagrams with estimated dimensions, wheel loads and crane weights. All crane components listed are based on CMAA Class "C" Service. All girder sections are estimated based on US tons of 2,000# and using grade 50 steel for both the wide flange beams and capping channels. All final calculations and dimensions should be checked by a qualified engineer.

Product Index

Subject	Page No.
Easy Connect Crane Kits	
Overview	3
Kit Includes	3
Kit Numbering System	4
Single Girder Top-Running Bridges	5-8
Single Girder Under-Running Bridges	9-12
Options	
End Connections	13-14
Main Collectors	15
Main Collector Pole	15
Alternate Bridge Control	15
Variable Frequency Drive Adder for Trolley Motion	15
Over Capacity Limit Switch	15
Trolley Traverse Brake	15
Upper/Lower Hoist Limit Switch	15
Hoist Rope Guide	15

Note: For Easy Connect Kits other than the Global and the World Series.
See Crane Components Specification and Price Book.

Overview

Yale Global King and Shaw-Box World Series Easy Connect Crane Kits by CraneSource is an easy and efficient way to assemble a single girder top or under-running crane. The majority of the crane is easily and quickly "wired up" with easy snap in connectors. No more tedious work with figuring out and connecting individual wires. CraneSource's pre-wired and tested electrical festoon systems reduce the time it takes to build a crane and eliminates the need for a skilled electrician. To build a complete crane, all that is needed in addition to the crane package is the bridge girder, end connections (sold as option) capacity plates, main collector pole and collectors (sold as option) and paint.

This booklet contains a price page followed by dimensional diagrams that provide estimated dimensions, weights and loadings for each crane and hoist combination. All Easy Connect Crane Kits meet or exceed CMAA Class "C" Service.

Each Kit Includes

Item	Qty
World Series or Global King Hoist	1
Tube frame, fixed axle bridge end trucks	1 Pair
2-speed bridge drives with brake, motor and reducer	1 pair
2-speed bridge control with disconnect switch and mainline contactor in a NEMA 4/12 enclosure	1
"Plug & Play" festoon systems comprised of:	
Festoon cross conductors	1
Festoon 8-button NEMA 12 pendant station	1
Bridge panel to motor connection cables and plugs	2
Bridge panel to main collectors connection cable and plug	1
Bridge panel support arms and hardware	2
Standard top-running bridge speed of 100 fpm - 75 fpm optional	
Standard under-running bridge speed of 95 fpm - 65 fpm optional	
F.O.B. Shipping Points	
Muskegon, MI.	
*Hoist and trolley with control panel and plugs	
*Bridge components	
*Motor and collector connecting cables	
Mayville, WI	
*Festoon pushbutton and cross conductor systems	

Options Offered

- Upper/lower geared hoist limit switch
- Hoist Rope Guide
- Variable frequency bridge control
- Girder end connections
- Main collector pole
- Main collector shoes
- Over capacity lift limit switch
- Variable frequency trolley control

Kit Numbering System

Pricing and ordering of a Yale Global King and Shaw-Box World Series Easy Connect Single Girder Crane Kit has been made simple. The kit numbering system is designed to insure that you get the correct combinations of features and components required to build your crane. You also have the ability to add options to the kits.

Example:

Yale Global King Kit

G05SSGT20-7/2/1/2-*

Shaw-Box World Series Kit

W05SSGT20-7/2/1/2-*

W or G 05 S SG T 20 - 2 / 1 / 2 - *
 A B C D E F G H I

- A** = Maximum Capacity in tons
- B** = Bridge Drive Gearing
 - S = A-4 Drive
- C** = SG Single Girder
- D** = Type of Crane
 - T = Top-Running
 - U = Under-Running
- E** = Maximum Span in feet
- F** = Hoist Speed Points of Control
 - 2 = 2-Speed
- G** = Trolley Speed Points of Control
 - 2 = 2-Speed
 - V = VFC
- H** = Bridge Speed Points of Control
 - 2 = 2-Speed
 - V = VFC
- I** = Power Supply Voltage
 - 2 = 230 VAC
 - 4 = 460 VAC
 - 5 = 575 VAC

Single Girder Top-Running Bridges

A-4 Drive with Yale Global King or Shaw-Box World Series Hoist & Tube Type End Trucks

(5 - 10 tons to 60' span)

Girder Sections for US (short) Tons

2-Speed Hoist / 2-Speed Trolley / 2-Speed Bridge

Capacity	Span (ft)	Yale Catalog No.	Shaw-Box Catalog No.	List Price	Weight (lbs)
5	20	G05SSGT20-2/2/2-*	W05SSGT20-2/2/2-*	13789	2728
	30	G05SSGT30-2/2/2-*	W05SSGT30-2/2/2-*	14011	2788
	36	G05SSGT36-2/2/2-*	W05SSGT36-2/2/2-*	14175	2800
	40	G05SSGT40-2/2/2-*	W05SSGT40-2/2/2-*	14301	2904
	48	G05SSGT48-2/2/2-*	W05SSGT48-2/2/2-*	14526	2960
	50	G05SSGT50-2/2/2-*	W05SSGT50-2/2/2-*	14590	3062
	60	G05SSGT60-2/2/2-*	W05SSGT60-2/2/2-*	14810	3122
7½	20	G7.5SSGT20-2/2/2-*	W7.5SSGT20-2/2/2-*	19476	4146
	30	G7.5SSGT30-2/2/2-*	W7.5SSGT30-2/2/2-*	19715	4206
	36	G7.5SSGT36-2/2/2-*	W7.5SSGT36-2/2/2-*	19893	4218
	40	G7.5SSGT40-2/2/2-*	W7.5SSGT40-2/2/2-*	19976	4354
	48	G7.5SSGT48-2/2/2-*	W7.5SSGT48-2/2/2-*	20219	4410
	50	G7.5SSGT50-2/2/2-*	W7.5SSGT50-2/2/2-*	20358	4542
	60	G7.5SSGT60-2/2/2-*	W7.5SSGT60-2/2/2-*	20595	4602
10	20	G10SSGT20-2/2/2-*	W10SSGT20-2/2/2-*	19639	4146
	30	G10SSGT30-2/2/2-*	W10SSGT30-2/2/2-*	19879	4206
	36	G10SSGT36-2/2/2-*	W10SSGT36-2/2/2-*	20056	4218
	40	G10SSGT40-2/2/2-*	W10SSGT40-2/2/2-*	20140	4354
	48	G10SSGT48-2/2/2-*	W10SSGT48-2/2/2-*	20382	4410
	50	G10SSGT50-2/2/2-*	W10SSGT50-2/2/2-*	20522	4542
	60	G10SSGT60-2/2/2-*	W10SSGT60-2/2/2-*	20759	4602

* Specify Voltage – (2) for 230V, (4) for 460V or (5) for 575V. 10 ton capacity at 230V not available for Easy Connect Crane Kits.

Note: Specify rail size when ordering

For 5-ton capacity, if selected bridge beam is other than what is listed in charts and has a flange width greater than 14", see options page for flange width adder.

2-speed bridge motors have 3:1 speed ratio.

Hoist Cat. No. GB2M05-025S20-2 or
WB2M05-025S20-2

Trolley Spd/HP 50/16.7 fpm / 1/4 / 1/12 hp

Speed HP 20/3.3 fpm / 7.5/1.25 hp

Bridge Speed 100/33 fpm

Max Lift 25 ft.

Based on ASCE Runway Rail 40#

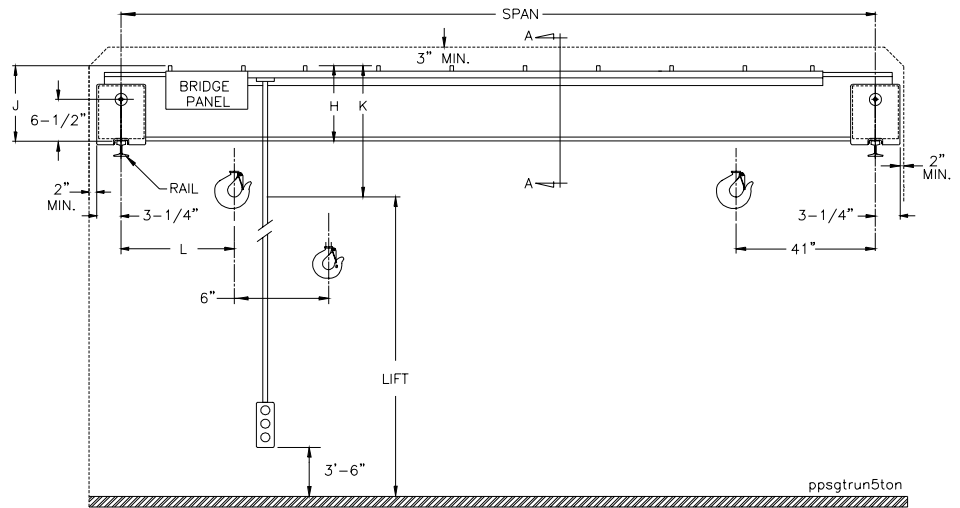
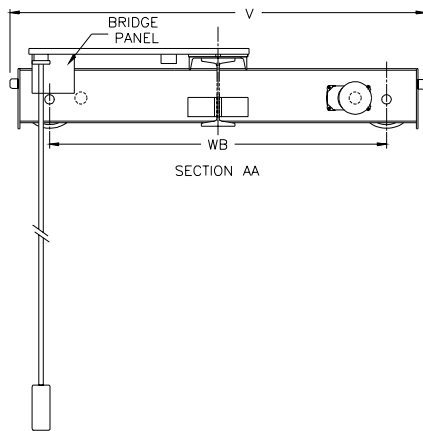
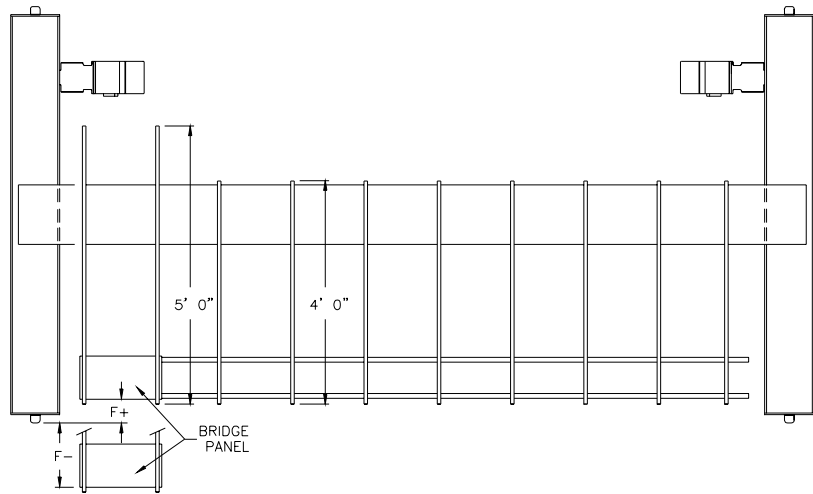
Girders based on: Grade 50 wide flange and cap channel steel

Class "C" Indoor Service

Grade 50 cap channels Acceleration of .4

Use of 2-speed or VFC

Capacities based on US tons



Weight in (lbs)*				Br. H.P. Ea.	Br. Wheel Dia. (in)	F	"H" Dim.	J	K	L	W.B.	V
Span (ft)	Bridge Beam	Complete Crane	Actual W.L.									
20	W14 x 53	4420	5998	1/2	6	- 3/4	16	17 1/2	39 1/4	26	4'-6"	5'-8 1/4"
22	W18 x 55	4612	6097			- 1/2	20	19 1/2	43 1/4			
24	W18 x 60	4887	6208			- 1/2	20	19 1/2	43 1/4			
26	W18 x 65	5182	6317			- 1/2	20	19 1/2	43 1/4			
28	W16 x 67	5410	6403			- 1 3/4	18	18 1/2	41			
30	W18 x 76	5863	6541			- 2 1/4	20	19 1/2	42 1/2			
32	W18 x 76	6055	6609			- 2 1/4	20	19 1/2	42 1/2			
34	W18 x 76	6247	6675			- 2 1/4	20	19 1/2	42 1/2			
36	W18 x 86	6809	6831			- 2 1/4	20	19 1/2	42 1/2			
38	W18 x 86	7117	6921			6 3/4	20	19 1/2	42 1/2			
40	W18 x 97	7780	7074	3/4	6	6 3/4	20	19 1/2	42 1/2	28	6'-0"	7'-2 1/4"
42	W18 x 97	8014	7144			6 3/4	20	19 1/2	42 1/2			
44	W21 x 111	8878	7369			6 1/8	23	21	45 1/4			
46	W21 x 111	9140	7443			6 1/8	23	21	45 1/4			
48	W21 x 122	9941	7650			6 1/8	23	21	45 1/4			
50	W21 x 122	10323	7695			15 1/8	23	21	45 1/4			
52	W24 x 131	11084	7892			14 7/8	26	22 1/2	48			
54	W24 x 146	12211	8181			14 7/8	26	22 1/2	48			
56	W24 x 146	12543	8269			14 7/8	26	22 1/2	48			
58	W27 x 161	13760	8579			14 1/4	29	24	50 1/4			
60	W27 x 161	14122	8626	14 1/4	29	24	50 1/4	34	7'-6"	8'-8 1/4"		
								40				

Note: Above dimensions and weights to be used for estimating purposes only, all should be checked by a qualified engineer before building.

Hoist Cat. No. GB2M07-025S24-2 or
WB2M07-025S24-2

Trolley Spd/HP 50/16.7 fpm / 1/2 / 1/6 hp

Speed HP 24/4 fpm / 15/2.5 hp

Bridge Speed 100/33 fpm

Max Lift 25 ft.

Based on ASCE Runway Rail 40#

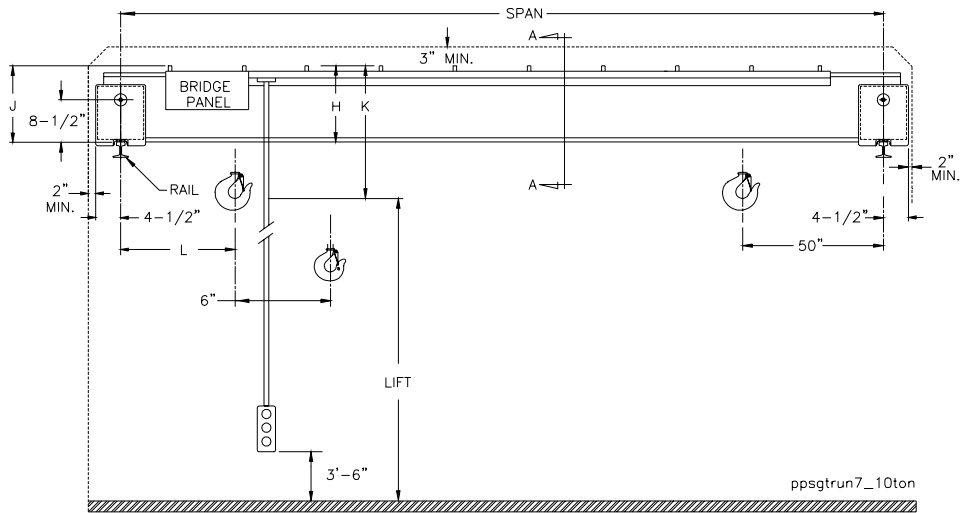
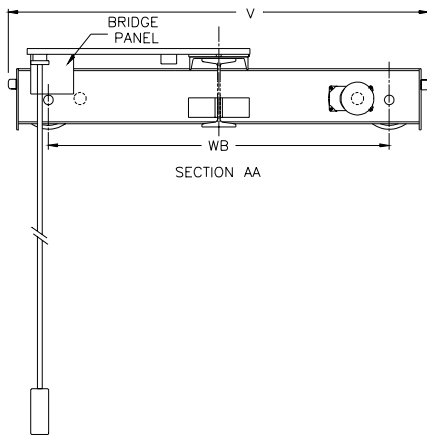
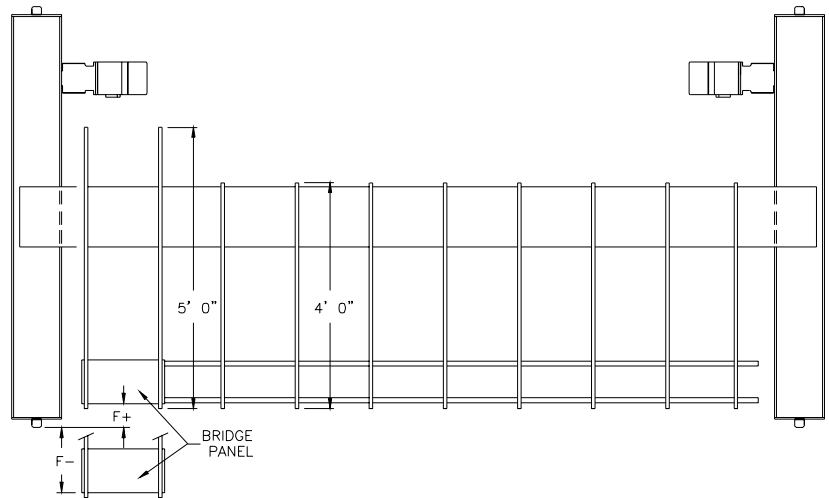
Girders based on: Grade 50 wide flange and cap channel steel

Class "C" Indoor Service

Grade 50 cap channels Acceleration of .4

Use of 2-speed or VFC

Capacities based on US tons



ppsgtrun7_10ton

Weight in (lbs)*					Br. H.P. Ea.	Br. Wheel Dia. (in)	F	"H" Dim.	J	K	L	W.B.	V
Span (ft)	Bridge Beam	Cap Channel	Complete Crane	Actual W.L.									
20	W18 x 71	N/A	6196	8621	3/4	8	-3 3/4	20	21 1/2	51 1/8	34	4'-6"	5'-11-5/8"
22	W18 x 71	N/A	6378	8775			-3 3/4	20	21 1/2	51 1/8			
24	W14 x 82	N/A	6835	8980			-5	16	19 1/2	47			
26	W21 x 83	N/A	7066	9113			-4 1/8	23	23	54 1/8			
28	W16 x 89	N/A	7446	9272			-5 1/8	18	20 1/2	49			
30	W16 x 89	N/A	7664	9381			-5 1/8	18	20 1/2	49			
32	W18 x 97	N/A	8146	9549			-5 1/2	20	21 1/2	51			
34	W18 x 97	N/A	8380	9648			-5 1/2	20	21 1/2	51			
36	W18 x 106	N/A	8947	9826			-5 5/8	20	21 1/2	51			
38	W21 x 111	N/A	9522	10001			2 7/8	23	23	54			
40	W21 x 111	N/A	9784	10095	2 7/8	23	23	54					
42	W21 x 122	N/A	10519	10303	2 7/8	23	23	54					
44	W24 x 131	N/A	11208	10498	2 5/8	26	24 1/2	57	6'-0"	7'-5-5/8"			
46	W24 x 146	N/A	12215	10769	2 5/8	26	24 1/2	56 1/2					
48	W24 x 146	N/A	12547	10870	2 5/8	26	24 1/2	56 1/2					
50	W24 x 146	N/A	13007	11001	11 5/8	26	24 1/2	56 1/2					
52	W27 x 114	C15 x 33.9	13406	11115	1	8	13	29 3/8	26 1/4	60 3/8	40	7'-6"	8' - 11-5/8"
54	W27 x 114	C15 x 33.9	13742	11212			13	29 3/8	26 1/4	60 3/8			
56	W27 x 114	MC18 x 42.7	14571	11431			13	29 1/2	26 1/4	60 1/2			
58	W27 x 114	MC18 x 42.7	14924	11529			13	29 1/2	26 1/4	60 1/2			
60	W30 x 124	MC18 x 42.7	15887	11706			12 3/4	32 1/2	27 3/4	63 1/2			

Note: Above dimensions and weights to be used for estimating purposes only, all should be checked by a qualified engineer before building.

Hoist Cat. No. GB2M10-025S20-2 or
WB2M10-025S20-2

Trolley Spd/HP 50/16.7 fpm / 1/2 / 1/6 hp

Speed HP 20/3.3 fpm / 15/2.5 hp

Bridge Speed 100/33 fpm

Max Lift 25 ft.

Based on ASCE Runway Rail 40#

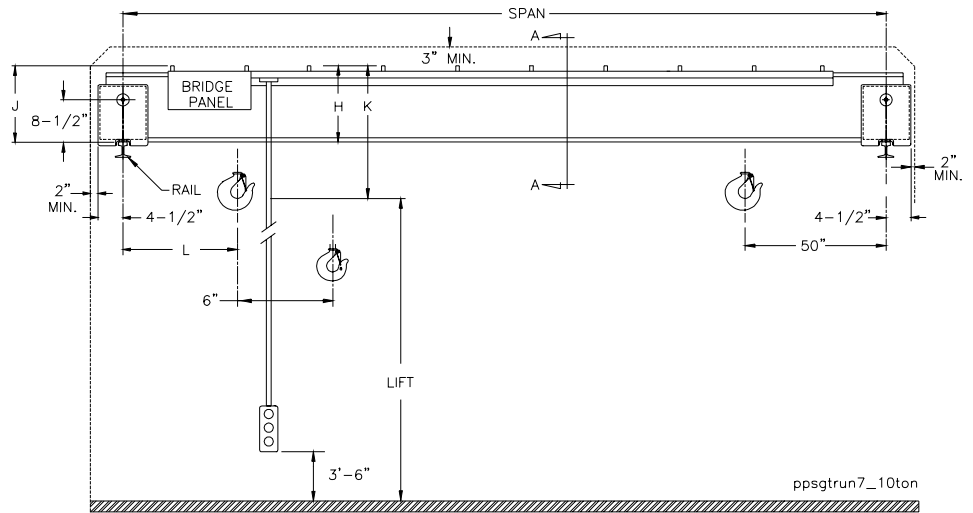
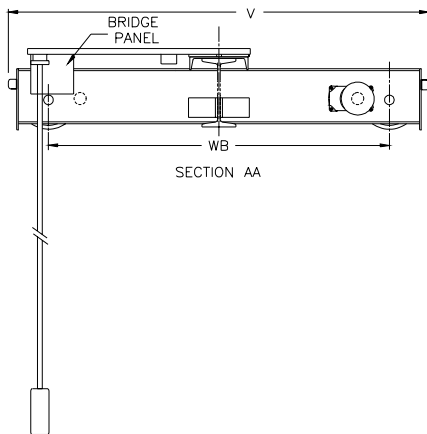
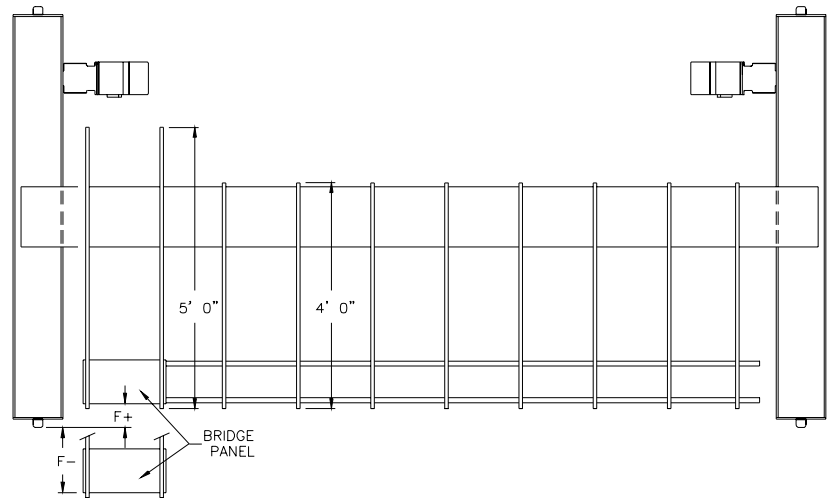
Girders based on: Grade 50 wide flange and cap channel steel

Class "C" Indoor Service

Grade 50 cap channels Acceleration of .4

Use of 2-speed or VFC

Capacities based on US tons



ppsgtrun7_10ton

Weight in (lbs)*					Br. H.P. Ea.	Br. Wheel Dia. (in)	F	"H" Dim.	J	K	L	W.B.	V
Span (ft)	Bridge Beam	Cap Channel	Complete Crane	Actual W.L.									
20	W21 x 93	N/A	6708	10904	1	8	-4 1/4	23	23	54 1/8	34	4'-6"	5'-11-3/8"
22	W21 x 93	N/A	6934	11102			-4 1/4	23	23	54 1/8			
24	W21 x 93	N/A	7160	11275			-4 1/4	23	23	54 1/8			
26	W16 x 100	N/A	7575	11477			-5 1/4	18	20 1/2	49			
28	W24 x 103	N/A	7902	11643			-4 1/2	26	24 1/2	57 1/8			
30	W27 x 114	N/A	8489	11861			-5	29	26	60			
32	W18 x 119	N/A	8922	12032			-5 5/8	20	21 1/2	51			
34	W18 x 119	N/A	9200	12155			-5 5/8	20	21 1/2	51			
36	W18 x 130	N/A	9885	12374			-5 1/2	20	21 1/2	51			
38	W24 x 131	N/A	10352	12533			2 5/8	26	24 1/2	57			
40	W21 x 132	N/A	10695	12656			2 6/8	23	23	54			
42	W24 x 146	N/A	11601	12916			2 1/2	26	24 1/2	56 1/2			
44	W24 x 146	N/A	11933	13029			2 1/2	26	24 1/2	56 1/2			
46	W27 x 161	N/A	12970	13315			2	29	26	59 1/4			
48	W27 x 161	N/A	13332	13430			2	29	26	59 1/4			
50	W30 x 173	N/A	14434	13727			10 1/2	32	27 1/2	62 1/8			
52	W30 x 132	C15 x 33.9	14410	13741	12 3/4	32 3/8	27 3/4	63 3/8	40	7'-6"	8'-11-3/8"		
54	W30 x 132	MC18 x 42.7	15257	13971	12 3/4	32 1/2	27 3/4	63 1/2					
56	W30 x 132	MC18 x 42.7	15646	14084	12 3/4	32 1/2	27 3/4	63 1/2					
58	W33 x 141	MC18 x 42.7	16567	14329	12 1/2	35 1/2	29 1/4	66 1/2					
60	W30 x 132	MC18 x 58	17343	14442	12 3/4	32 1/2	27 7/8	63 3/4					

Note: Above dimensions and weights to be used for estimating purposes only, all should be checked by a qualified engineer before building.

Single Girder Under-Running Bridges

A-4 Drive with Yale Global King or Shaw-Box World Series Hoist & Under-Running End Trucks

(5 - 10 tons to 60' span)

Girder Sections for US (short) Tons

2-Speed Hoist / 2-Speed Trolley / 2-Speed Bridge

Capacity	Span (ft)	Yale Catalog No.	Shaw-Box Catalog No.	List Price	Weight (lbs)
5	20	G05SSGU20-2/2/2-*	W05SSGU20-2/2/2-*	14988	2960
	30	G05SSGU30-2/2/2-*	W05SSGU30-2/2/2-*	15207	3020
	36	G05SSGU36-2/2/2-*	W05SSGU36-2/2/2-*	15370	3032
	40	G05SSGU40-2/2/2-*	W05SSGU40-2/2/2-*	15505	3150
	48	G05SSGU48-2/2/2-*	W05SSGU48-2/2/2-*	15728	3206
	50	G05SSGU50-2/2/2-*	W05SSGU50-2/2/2-*	15736	3340
	60	G05SSGU60-2/2/2-*	W05SSGU60-2/2/2-*	15953	3400
7½	20	G7.5SSGU20-2/2/2-*	W7.5SSGU20-2/2/2-*	22313	4590
	30	G7.5SSGU30-2/2/2-*	W7.5SSGU30-2/2/2-*	22573	4650
	36	G7.5SSGU36-2/2/2-*	W7.5SSGU36-2/2/2-*	22791	4662
	40	G7.5SSGU40-2/2/2-*	W7.5SSGU40-2/2/2-*	22829	4816
	48	G7.5SSGU48-2/2/2-*	W7.5SSGU48-2/2/2-*	23094	4872
	50	G7.5SSGU50-2/2/2-*	W7.5SSGU50-2/2/2-*	23221	5038
	60	G7.5SSGU60-2/2/2-*	W7.5SSGU60-2/2/2-*	23479	5098
10	20	G10SSGU20-2/2/2-*	W10SSGU20-2/2/2-*	22476	4640
	30	G10SSGU30-2/2/2-*	W10SSGU30-2/2/2-*	22736	4700
	36	G10SSGU36-2/2/2-*	W10SSGU36-2/2/2-*	22954	4712
	40	G10SSGU40-2/2/2-*	W10SSGU40-2/2/2-*	22993	4866
	48	G10SSGU48-2/2/2-*	W10SSGU48-2/2/2-*	23259	4922
	50	G10SSGU50-2/2/2-*	W10SSGU50-2/2/2-*	23385	5088
	60	G10SSGU60-2/2/2-*	W10SSGU60-2/2/2-*	23643	5148

* Specify Voltage – (2) for 230V, (4) for 460V or (5) for 575V. 10 ton capacity at 230V not available for Easy Connect Crane Kits.

Note: Specify runway beam flange width if other than standard 4-5/8" - 6" when ordering.

For 5-ton capacity, if selected bridge beam is other than what is listed in charts and has a flange width greater than 14", see options page for flange width adder.

2-speed bridge motors have 3:1 speed ratio.

Hoist Cat. No. GB2M05-025S20-2 or WB2M05-025S20-2
Trolley Spd/HP 50/16.7 fpm / 1/4 / 1/12 hp
Speed HP 20/3.3 fpm / 7.5/1.25 hp
Bridge Speed 95/32 fpm
Max Lift 25 ft.

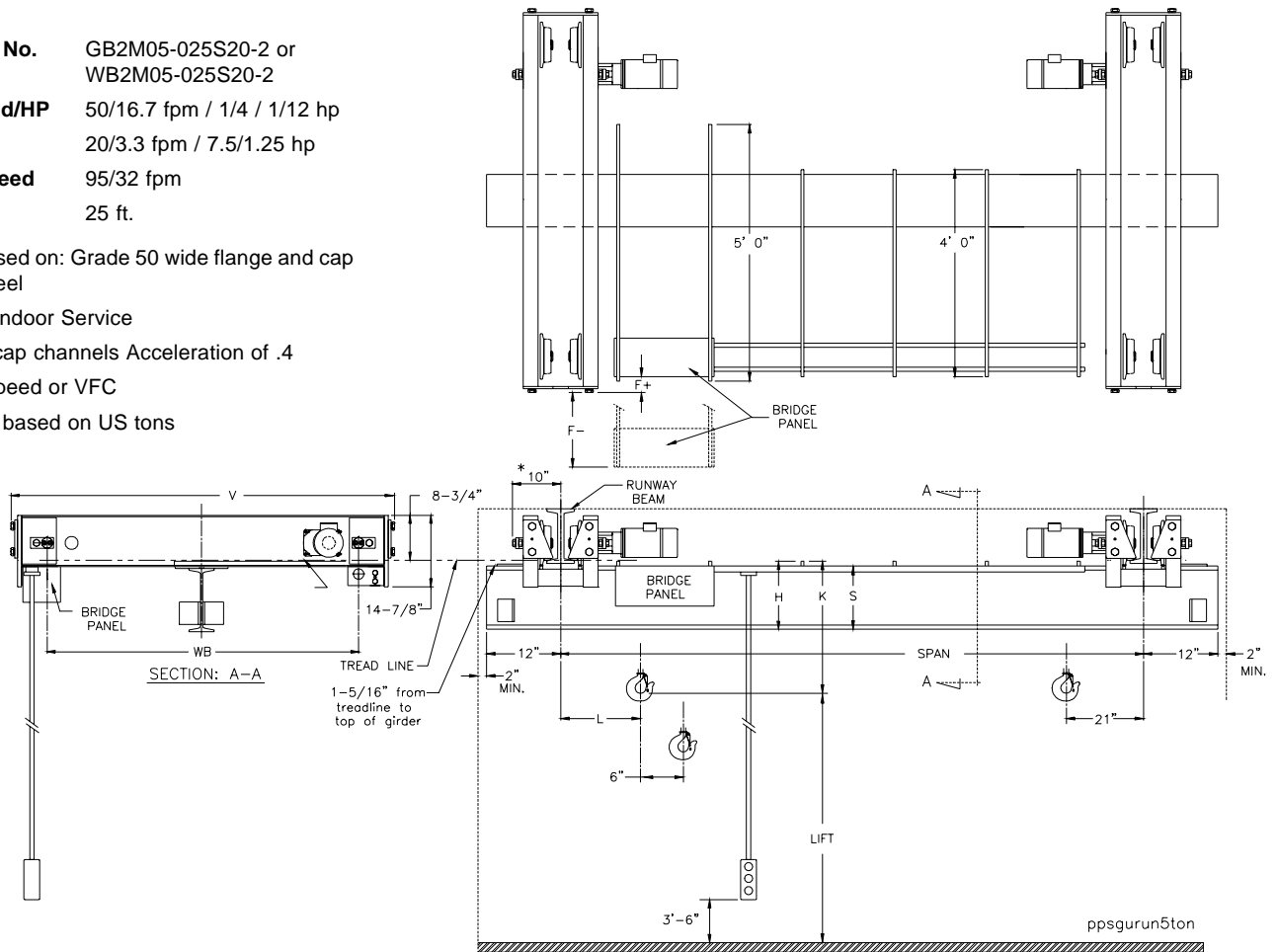
Girders based on: Grade 50 wide flange and cap channel steel

Class "C" Indoor Service

Grade 50 cap channels Acceleration of .4

Use of 2-speed or VFC

Capacities based on US tons



*Based on 6" Wide Runway Beam Flange

Weight in (lbs)				Br. H.P. Ea.	Br. Wheel Dia. (in)	F	"H" Dim.	K	L	S	W.B.	V		
Span (ft)	Bridge Beam	Complete Crane	Actual W.L.**											
20	W14 x 53	4495	6086	1/2	6	1	16	38 5/8	23	14	4'-6"	5'-11-3/4"		
22	W18 x 55	4689	6179			1 1/4	20	42 5/8		18				
24	W18 x 60	4969	6286			1 1/4	20	42 5/8		18				
26	W18 x 65	5269	6391			1 1/4	20	42 5/8		18				
28	W16 x 67	5499	6474			-0	18	40 1/4	16	30				
30	W18 x 76	5961	6499			- 1/2	20	41 7/8	18					
32	W18 x 76	6153	6572			- 1/2	20	41 7/8	18					
34	W18 x 76	6345	6641			- 1/2	20	41 7/8	18					
36	W18 x 86	6917	6802			- 1/2	20	41 7/8	18	33				
38	W18 x 86	7249	6901			8 1/2	20	41 7/8	18					
40	W18 x 97	7923	7048	8 1/2	20	41 7/8	18							
42	W18 x 97	8157	7120	8 1/2	20	41 7/8	18							
44	W21 x 111	9035	7352	3/4	6	7 7/8	23	44 5/8	39	21	6'-0"	7'-5-3/4"		
46	W21 x 111	9297	7428			7 7/8	23	44 5/8		21				
48	W21 x 122	10109	7640			7 7/8	23	44 5/8		21				
50	W21 x 122	10513	7692			16 7/8	23	44 5/8		21				
52	W24 x 131	11283	7894			16 5/8	26	47 3/8	24	24				
54	W24 x 146	12425	8187			16 5/8	26	47 3/8	24					
56	W24 x 146	12757	8278			16 5/8	26	47 3/8	24					
58	W27 x 161	13989	8592			16 1/8	29	49 5/8	27					
60	W27 x 161	14351	8641			16 1/8	29	49 5/8	45	27			7'-6"	8'-11-3/4"

Note: Above dimensions and weights to be used for estimating purposes only, all should be checked by a qualified engineer before building.

**Per Pair

Hoist Cat. No. GB2M07-025S24-2 or WB2M07-025S24-2
Trolley Spd/HP 50/16.7 fpm / 1/2 / 1/6 hp
Speed HP 24/4 fpm / 15/2.5 hp
Bridge Speed 95/32 fpm
Max Lift 25 ft.

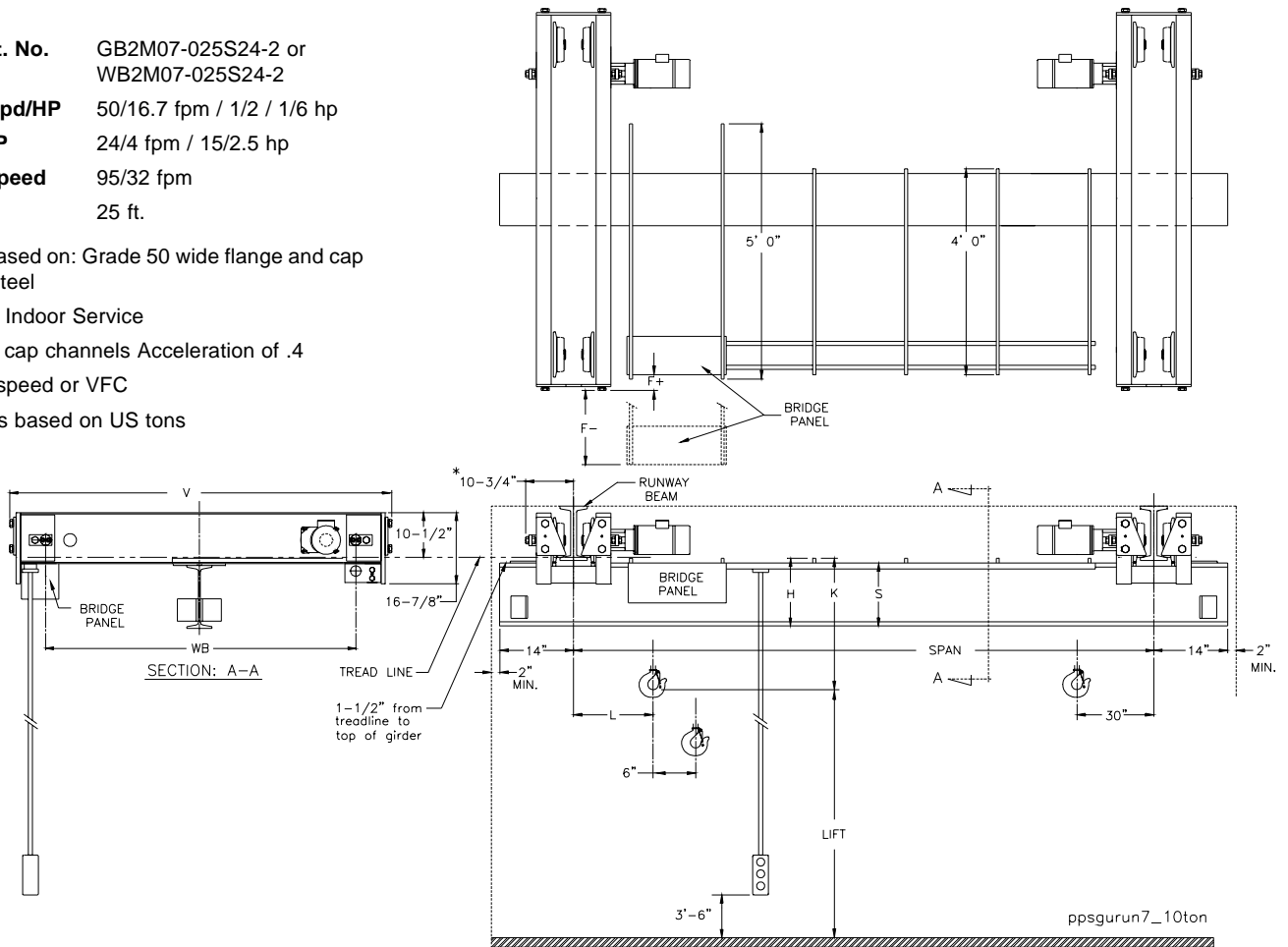
Girders based on: Grade 50 wide flange and cap channel steel

Class "C" Indoor Service

Grade 50 cap channels Acceleration of .4

Use of 2-speed or VFC

Capacities based on US tons



*Based on 6" Wide Runway Beam Flange

Weight in (lbs)					Br. H.P. Ea.	Br. Wheel Dia. (in)	F	"H" Dim.	K	L	S	W.B.	V			
Span (ft)	Bridge Beam	Cap Channel	Complete Crane	Actual W.L.**												
20	W18 x 71	N/A	6531	9145	3/4	8	-3	20	42 3/4	22	18	4'-6"	6'-1-1/8"			
22	W18 x 71	N/A	6713	9259			-3	20	42 3/4		18					
24	W14 x 82	N/A	7181	9432			-4 1/4	16	38 3/4		14					
26	W21 x 83	N/A	7413	9537			-3 3/8	23	45 3/4		21					
28	W16 x 89	N/A	7799	9674			-4 3/8	18	40 1/2	16	29			16		
30	W16 x 89	N/A	8017	9590			-4 3/8	18	40	16						
32	W18 x 97	N/A	8507	9752			-4 3/4	20	42	18	32			18	6'-0"	7'-7-1/8"
34	W18 x 97	N/A	8741	9844			-4 3/4	20	42	18						
36	W18 x 106	N/A	9317	10018			-4 7/8	20	42	18	38			21	7'-6"	9'-1-1/8"
38	W21 x 111	N/A	9915	10194			3 5/8	23	45	21						
40	W21 x 111	N/A	10177	10228	3 5/8	23	45	21	44	21	7'-6"	9'-1-1/8"				
42	W21 x 122	N/A	10923	10437	3 5/8	23	45	21								
44	W24 x 131	N/A	11621	10632	3 3/8	26	47 3/4	24	38	24	7'-6"	9'-1-1/8"				
46	W24 x 146	N/A	12643	10906	3 3/8	26	47 3/4	24								
48	W24 x 146	N/A	12975	11005	3 3/8	26	47 3/4	24	38	24	7'-6"	9'-1-1/8"				
50	W24 x 146	N/A	13449	11050	12 3/8	26	47 3/4	24								
52	W27 x 114	C15 x 33.9	13816	11158	13 3/4	29 3/8	50 7/8	27 1/2	44	27 1/2	7'-6"	9'-1-1/8"				
54	W27 x 114	C15 x 33.9	14152	11257	13 3/4	29 3/8	50 7/8	27 1/2								
56	W27 x 114	MC18 x 42.7	14980	11478	13 3/4	29 1/2	51	27 1/2	44	27 1/2	7'-6"	9'-1-1/8"				
58	W27 x 114	MC18 x 42.7	15334	11578	13 3/4	29 1/2	50 1/4	27 1/2								
60	W30 x 124	MC18 x 42.7	16307	11759	1-1/2	13 1/2	32 1/2	53 1/4	44	30 1/2	7'-6"	9'-1-1/8"				

Note: Above dimensions and weights to be used for estimating purposes only, all should be checked by a qualified engineer before building.

**Per Pair

Hoist Cat. No. GB2M10-025S20-2 or WB2M10-025S20-2
Trolley Spd/HP 50/16.7 fpm / 1/2 / 1/6 hp
Speed HP 20/3.3 fpm / 15/2.5 hp
Bridge Speed 95/32 fpm
Max Lift 25 ft.

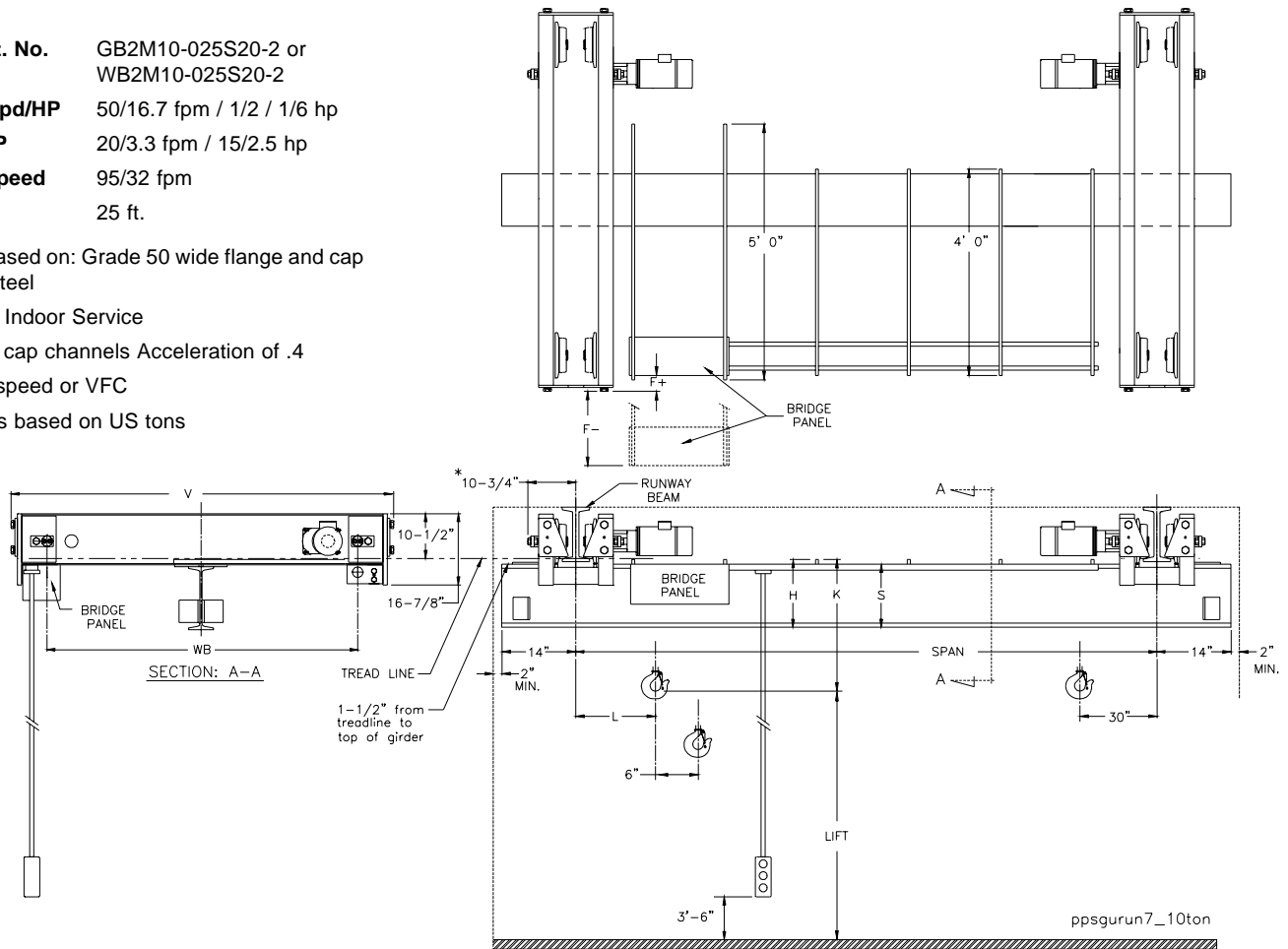
Girders based on: Grade 50 wide flange and cap channel steel

Class "C" Indoor Service

Grade 50 cap channels Acceleration of .4

Use of 2-speed or VFC

Capacities based on US tons



*Based on 6" Wide Runway Beam Flange

Weight in (lbs)					Br. H.P. Ea.	Br. Wheel Dia. (in)	F	"H" Dim.	K	L	S	W.B.	V
Span (ft)	Bridge Beam	Cap Channel	Complete Crane	Actual W.L.**									
20	W21 x 93	N/A	7065	11559	1	8	-3 1/2	23	45 3/4	22	21	4'-6"	6'-1-1/8"
22	W21 x 93	N/A	7291	11706			21						
24	W21 x 93	N/A	7517	11836			21						
26	W16 x 100	N/A	7939	12003			16						
28	W24 x 103	N/A	8269	12138			24						
30	W27 x 114	N/A	8867	12111			27						
32	W18 x 119	N/A	9305	12273			18						
34	W18 x 119	N/A	9583	12388			18						
36	W18 x 130	N/A	10279	12602			18						
38	W24 x 131	N/A	10765	12759			24						
40	W21 x 132	N/A	11109	12805	32	8	3 1/2	23	45	21	6'-0"	7'-7-1/8"	
42	W24 x 146	N/A	12029	13066			24						
44	W24 x 146	N/A	12361	13177			24						
46	W27 x 161	N/A	13413	13465			27						
48	W27 x 161	N/A	13775	13578			27						
50	W30 x 173	N/A	14903	13766			30						
52	W30 x 132	C15 x 33.9	14838	13772			30 1/2						
54	W30 x 132	MC18 x 42.7	15685	14005			30 1/2						
56	W30 x 132	MC18 x 42.7	16074	14121			30 1/2						
58	W33 x 141	MC18 x 42.7	17004	14371			33 1/2						
60	W30 x 132	MC18 x 58	17771	14483	44	1-1/2	13 1/2	32 3/4	53 1/2	30 3/4	7'-6"	9'-1-1/8"	
							13 1/2	32 3/8	53 7/8				
							13 1/2	32 1/2	54				
							13 1/2	32 1/2	54				
					13	35 1/2	56 1/4						
					13 1/2	32 3/4	53 1/2						

Note: Above dimensions and weights to be used for estimating purposes only, all should be checked by a qualified engineer before building.

**Per Pair

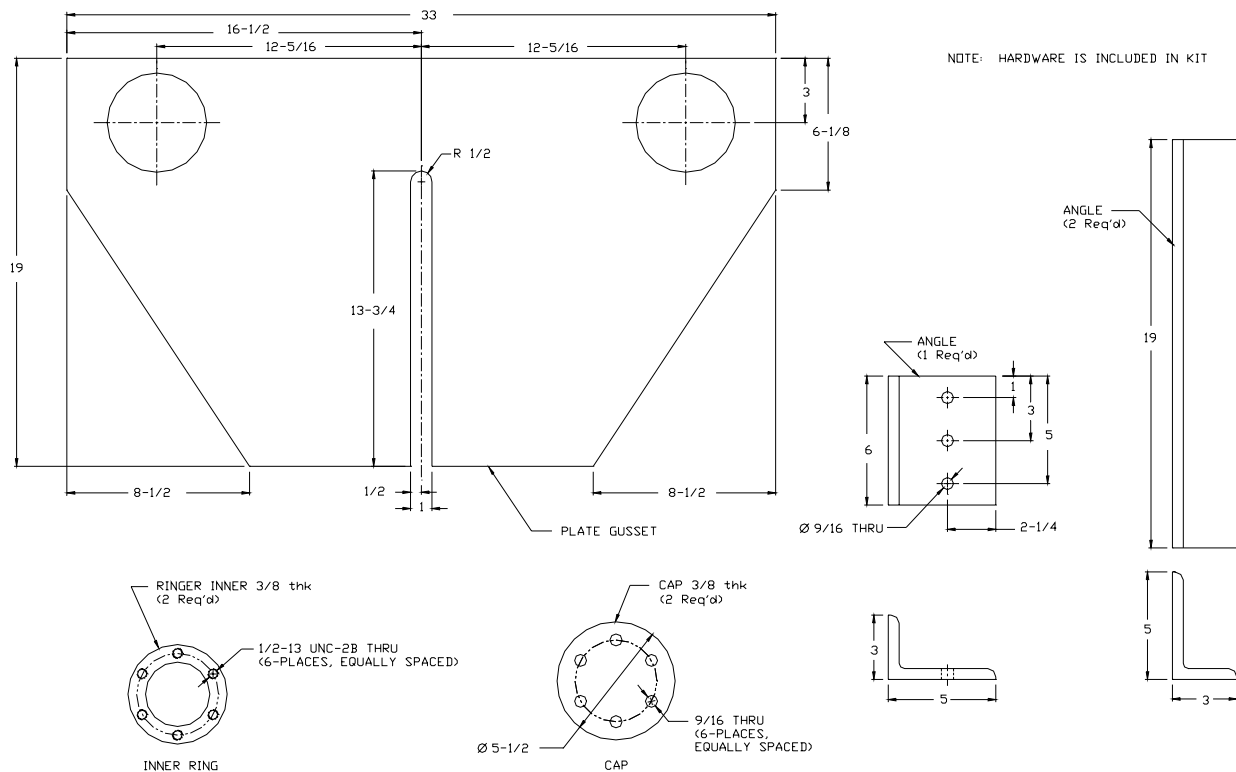
End Connection Kits Top-Running Fixed Axle Tube Type End Trucks Only

"WHALES TAIL" KIT - Weld/Bolt

Following kit consists of two end connections for a single girder top-running crane built with structural shape beams. Can be used for either a welded or bolted connection.

Part No.	List Price	Weight (lbs)
444697-10		
When purchasing with kits	\$546	200

Catalog No. 444697-10 Dimensional Reference



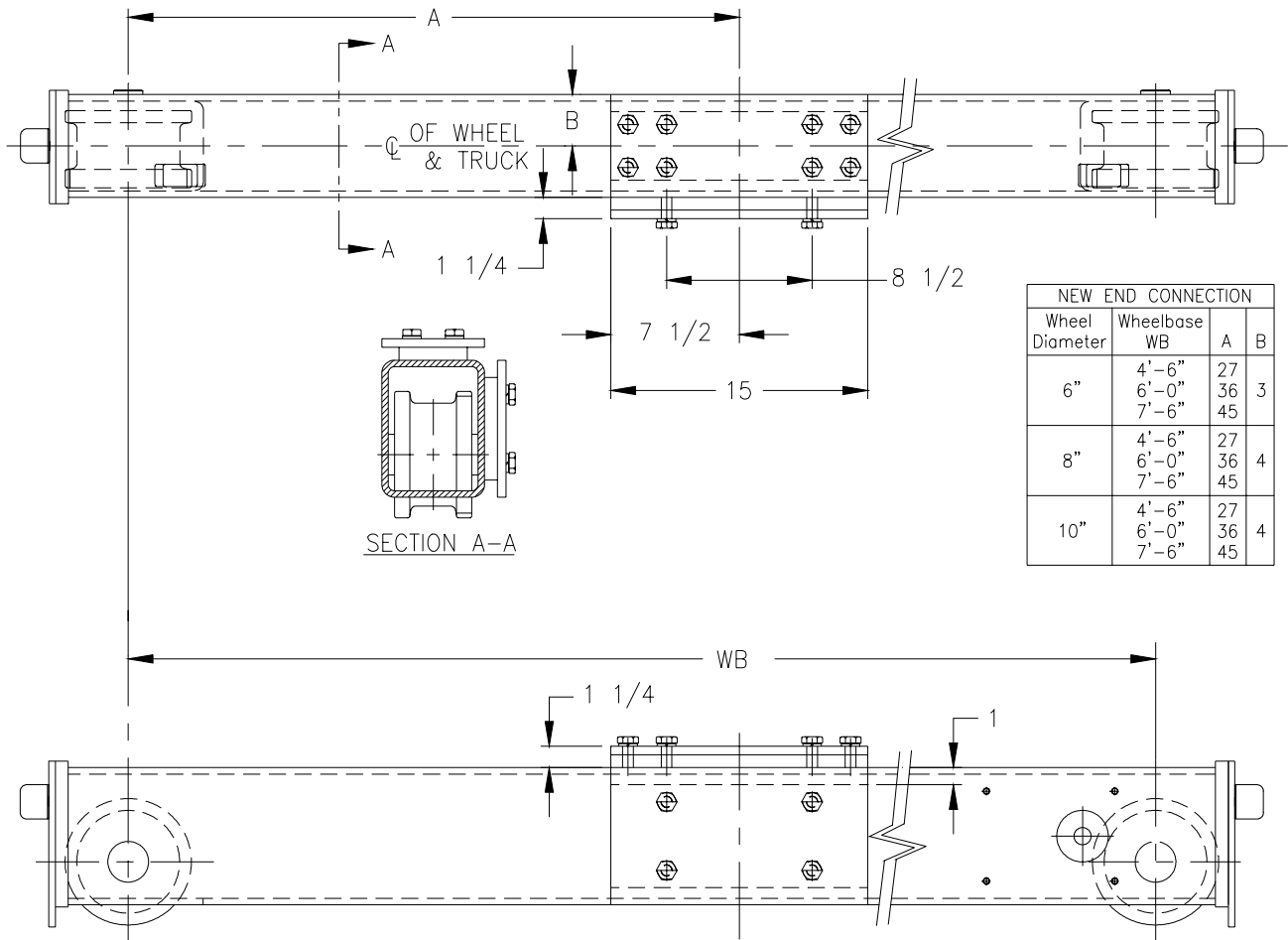
Illustrated are the contents (less connecting bolts) for 1/2 of the kit. One connection is provided for each end of the bridge girder

**Bolted Plate End Connection Kit
Dimensional Reference**

BOLTED PLATE END CONNECTIONS

Ships bolted to truck, will not interfere with end approach no welding needed.

Truck Wheel Diameter	Single Girder List Price
6"	\$432
8"	541



CraneSource Yale Global King & Shaw-Box World Series Easy Connect Crane Kits Options

Main Collector Shoes & Arm (not including staff)

Catalog Number	Description	Lot of (3) List Price	Weight (lbs)
931077	30 amp Short Arm	114	5
931078	30 amp Long Arm	158	8

Main Collector Pole (not including staff)

Catalog Number	Description	Price for One	Weight (lbs)
901590	Collector Pole	49	10

Optional Bridge Control (Add/deduct to/from base 2-speed)

H.P. (each motor)	Add for VFD
½	463
¾	463
1	426
1½	-(6)

Hoist Options

	<u>List Price</u>
Upper/Lower Hoist Geared Control Circuit Limit Switch	add..... \$197
Rope Guide	add..... 131
Over Capacity Lift Limit Switch	add..... 328
Trolley Variable Frequency Drive (Electromotive P3 for 460 or 230V/3/60)	add..... 853
Trolley Brake	add..... 354
For unlisted options	call the Application Engineering Department in Muskegon, MI



Lift-Tech International
414 West Broadway Ave.
P.O. Box 769
Muskegon, Michigan 49443-0769
(800) 742-9269 Phone
(800) 742-9270 Fax